



OCEANIC

IRON ORE CORP

WWW.OCEANICIRONORE.COM

TSX:V - FEO

Investor Presentation

APRIL 2017

Cautionary Notes

This presentation includes certain "Forward-Looking Statements" as that term is used in applicable securities law. All statements included herein, other than statements of historical fact, including, without limitation, statements regarding potential mineralization and resources, exploration results, and future plans and objectives of Oceanic Iron Ore Corp. ("Oceanic", or the "Company"), are forward-looking statements that involve various risks and uncertainties. In certain cases, forward-looking statements can be identified by the use of words such as "plans", "expects" or "does not expect", "scheduled", "believes", or variations of such words and phrases or statements that certain actions, events or results "potentially", "may", "could", "would", "might" or "will" be taken, occur or be achieved. There can be no assurance that such statements will prove to be accurate, and actual results could differ materially from those expressed or implied by such statements. Forward-looking statements are based on certain assumptions that management believes are reasonable at the time they are made. In making the forward-looking statements in this presentation, the Company has applied several material assumptions, including, but not limited to, the assumption that: (1) there being no significant disruptions affecting operations, whether due to labour/supply disruptions, damage to equipment or otherwise; (2) permitting, development, expansion and power supply proceeding on a basis consistent with the Company's current expectations; (3) certain price assumptions for iron ore; (4) prices for availability of natural gas, fuel oil, electricity, parts and equipment and other key supplies remaining consistent with current levels; (5) the accuracy of current mineral resource estimates on the Company's property; and (6) labour and material costs increasing on a basis consistent with the Company's current expectations. Important factors that could cause actual results to differ materially from the Company's expectations are disclosed under the heading "Risks and Uncertainties " in the Company's MD&A filed February 23rd, 2017 (a copy of which is publicly available on SEDAR at www.sedar.com under the Company's profile) and elsewhere in documents filed from time to time, including MD&A, with the TSX Venture Exchange and other regulatory authorities. Such factors include, among others, risks related to the ability of the Company to obtain necessary financing and adequate insurance; the economy generally; fluctuations in the currency markets; fluctuations in the spot and forward price of iron ore or certain other commodities (e.g., diesel fuel and electricity); changes in interest rates; disruption to the credit markets and delays in obtaining financing; the possibility of cost overruns or unanticipated expenses; employee relations. Accordingly, readers are advised not to place undue reliance on Forward-Looking Statements. Except as required under applicable securities legislation, the Company undertakes no obligation to publicly update or revise Forward-Looking Statements, whether as a result of new information, future events or otherwise.

Eddy Canova, P.Geo., OGQ (403), the Director of Exploration for the Company and a Qualified Person as defined by NI 43-101, has reviewed and is responsible for the technical information contained in this presentation.

Corporate Overview

Capitalization Summary (April 17, 2017)	
Shares in Issue	49,962,813
Warrants (\$0.30)	4,925,000
Options (\$0.15 - \$0.25)	4,955,950
Convertible Debenture (\$0.43)	4,710,067
Restricted Share Units	766,666
Fully Diluted	65,320,496
Listings	FEO (TSX-V)

- Iron ore development in the Labrador Trough (Québec)
- Led by a highly experienced management team that has managed, operated developed and/or sold over \$20 bn in assets
- 100% owned Ungava Bay projects - Hopes Advance, Morgan Lake, Roberts Lake
- Largest single concession holder in Québec focusing on iron ore – 3,703 mining titles over 1,568 km²
- Currently advancing Hopes Advance project through Feasibility Study
- Agreement with Power China on the framework for future development of the Hopes Advance project – August 2016



HOPES ADVANCE PROJECT - A World Class Premium Product Iron Ore Project

- World Class Iron Ore Reserves
- Lowest Quartile Costs
- Best in Class Management
- Superior Quality Product
- Stands Up in All Price Cycles



Hopes Advance 66.5% Fe Pellets



Iron Ore Carrier

Hopes Advance – The Premier High Quality, Low Cost Iron Ore Project in North America

<p>Robust Pre-Feasibility Study* Economics</p>	<ul style="list-style-type: none"> • Base case pre-tax NPV of \$5.6bn and unlevered IRR of 20.5% • Life of mine operating cost \$30/tonne, potential to become one of the world’s lowest operating cost iron ore producers
<p>Compelling Infrastructure Advantage</p>	<ul style="list-style-type: none"> • Located on the coast, no rail infrastructure – significant capex and opex savings • Independence and self-reliance over development of power and port infrastructure and implementation of project schedule
<p>Large Scale Deposit</p>	<ul style="list-style-type: none"> • Scale – 1.36 bn Proven and Probable Reserves** • Low mining costs with strip ratio of 0.5:1 in years 1 to 15
<p>Straightforward Metallurgy</p>	<ul style="list-style-type: none"> • High weight and iron recoveries with simple flowsheet • Extensive bench scale and pilot plant testing suggest high quality product with 4.5% silica, very low other impurities and 66.5% iron grade
<p>Strategic Partner Appeal</p>	<ul style="list-style-type: none"> • LOI’s in place with Québec government and Inuit Community • Low costs and “no rail” infrastructure advantage combined with scale and a high quality product are unique and desirable qualities that have wide appeal amongst steel companies globally • EPC Framework Agreement established with Power China International

* See slide 7

** See slide 12

Hopes Advance Pre-Feasibility Highlights (September 2012)

Variable	PFS Highlights
FOB Price	\$100/tonne
CAD:USD	\$1.00
LOM operating cost	\$30.18/tonne
Pre-tax NPV (8%)	\$5.6bn
Post-Tax NPV (8%)	\$3.2 bn
Pre-tax IRR (levered)	23.2%
Post-tax IRR (levered)	19.2%
Initial Capital Cost	\$2.85 bn
Expansion Capital Cost	\$1.61 bn
Strip Ratio Years 1 - 15	0.57
Strip Ratio LOM	1.17

- Phase 1 production of 10 million tpa **to year 10**
- Expansion to 20 million tpa production **thereafter**
- Expected mine life of 31 years
- Since 2012 higher CAD\$ exchange rate and lower fuel prices offset a significant portion of the decline in iron prices and the project remains attractive

Significant Progress to Date

- Technical
 - Pilot plant testwork and flowsheet development
 - Pre-Feasibility Study in respect of Hopes Advance completed
 - Proven and probable mineral reserves* established
- Project Optimization
 - Product Value in Use Marketing Study
 - Product Optimization Study
 - Shipping Optimization Study
- Stakeholder Partnerships
 - LOI signed with Inuit community
 - LOI received from the Ministry of Finance and Economy of the Québec Government for Investment in Hopes Advance Project
- EPC Framework Agreement executed with Power China International charters a clear line of sight to financing and construction

2016/7 – Breakthrough Framework Agreement with Power China International

- Power China is a large Chinese State Owned Enterprise with the skills, knowledge, and experience to execute on the project's EPC requirements
- Power China's interest is developing business in North America
- The company has USD \$77 billion in assets and 200,000 employees
- Power China will facilitate financing and assist with off take agreements with Chinese steel producers
- EPC Proposal Letter received March 30, 2017
 - No material deviations in scope, methodology and capital costs from the Pre-Feasibility Study
 - Front End Engineering Design (FEED) Study Proposed to assess execution of design, construction and operation in more detail
- Expected to lead to an EPC contract, project financing and construction
- Power China has dedicated a team of 25 to the project

Current Global Sources Are Creating Demand For Higher Quality Supply

- Quality of major supply sources has declined and the decline continues
- Japanese market has focused on high quality flat carbon and stainless steel products to meet consumer demand. All Japanese steel producers currently cite quality concerns with existing iron ore supply
- The problem gets amplified with retooling in China to transform some existing long steel capacity to flat steel to meet growing domestic consumer demands
- Increased Chinese export of automotive and white goods will create additional future demand
- The trajectory in respect of steel production supports higher premiums for flat steel products than have been observed during the past decade – Vale blend confirms this
- The corresponding decrease in iron ore quality supports markedly higher future premiums for iron ore products containing very low impurities. Canada is one of the best supply sources for high quality products
- Notwithstanding cyclical pricing issues related to volume oversupply declining quality represents a structural change in the global market

Next Steps

Development Activity	Target Completion Date
Strategic Partnering, FEED Study Commencement, and Project Financing	2017
Completion of Environmental Impact Study	2017 / 2018
Negotiate impact benefits agreement with local stakeholders	2017
Project Construction	2019 – 21
Production	2021- 2052+

Hopes Advance Mineral Reserve

MINERAL RESERVES (25% Fe cut-off)

Category	Tonnes	Total Fe (%)	Weight Recovery (%)
Proven Reserves	763,276,000	32.3%	37.4%
Probable Reserves	595,990,000	32.1%	37.1%
Proven and Probable Reserves	1,359,266,000	32.2%	37.3%

Disclosure:

- Open pit reserves are based on a 25% Fe cut off grade
- Reserves calculated based on industry standard pit optimization techniques guiding detailed pit designs including ramps and surface constraints. The mineral reserve is contained within the mineral resource. The effective date of the mineral reserve estimate is September 19, 2012
- Excludes inferred resources of approximately 72.7 million tonnes of 32.8% Fe. Mineral resources that are not mineral reserves do not have demonstrated economic viability.
- There are no known legal, political, environmental or other risks that could materially affect the potential development of the mineral reserve.

Hopes Advance Images



Castle Mountain



Zone 2



Camp

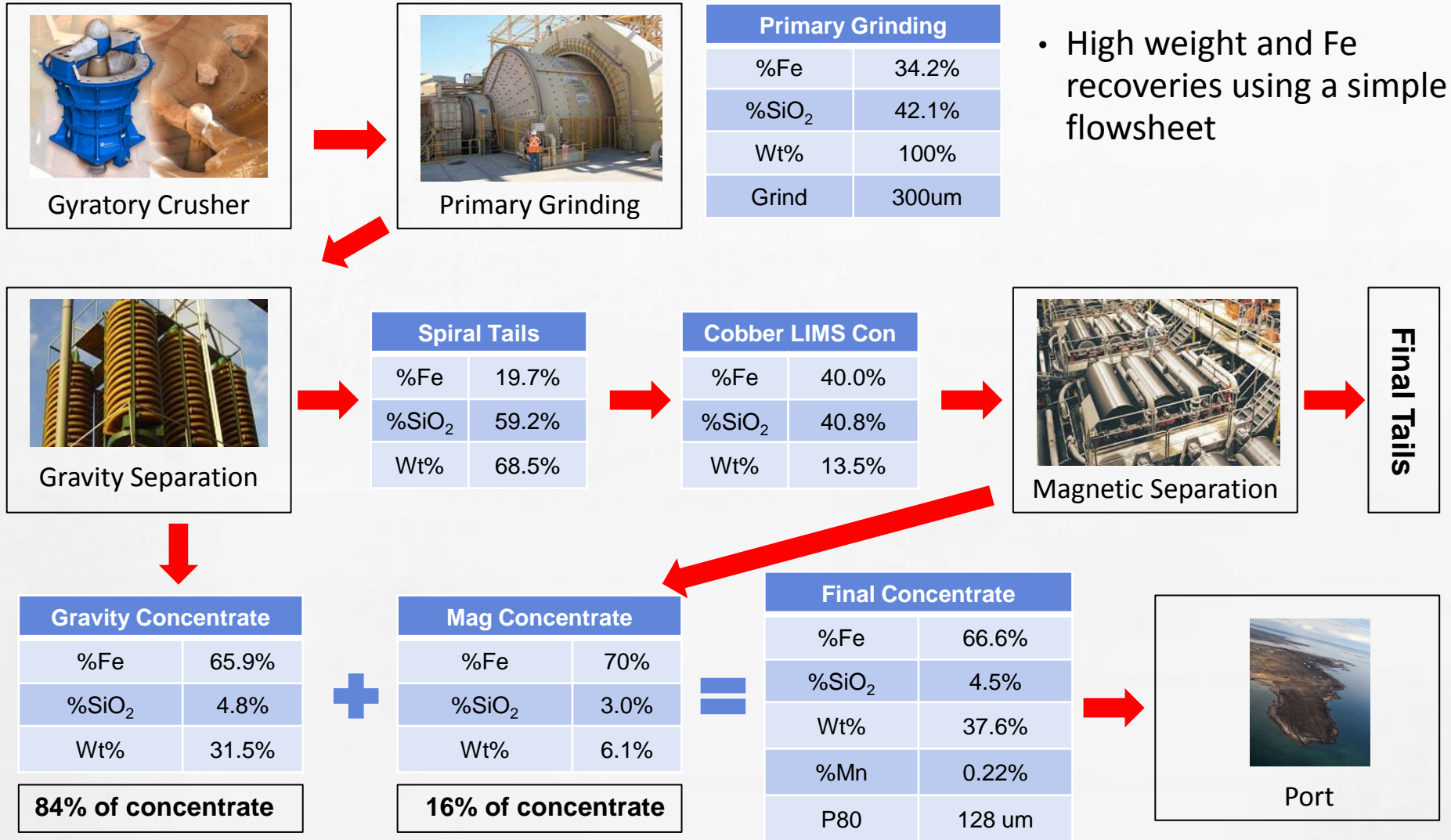


Drill Core

Hopes Advance Metallurgy

<p>Bench – Scale Testwork April 2012</p>	<ul style="list-style-type: none"> • 600 samples across all deposits at Hopes Advance • Demonstrated high weight recoveries with high percentage of iron recovery from gravity process • Simple process flow sheet with high grade 66.5% concentrate • Very low levels of deleterious materials, $\leq 4.5\%$ Silica
<p>Pilot Plant Testwork and Flowsheet Development September 2012</p>	<ul style="list-style-type: none"> • Based on 10 tonne and 250 tonne composite samples from Hopes Advance • Simple flowsheet
<p>Attributes</p>	<ul style="list-style-type: none"> • Minus 300 micron (minus 50 mesh) coarse grind liberates 87% of Fe units • Remaining 13% upgraded through fine grind and magnetic separation • Low processing cost, results from low grind and low power requirements

Hopes Advance Flowsheet – Simple Metallurgy



Note: Based on Pilot Plant scale testwork in respect of the Castle Mountain deposit which supports at least the first 15 years of production

Major Elements (%)*

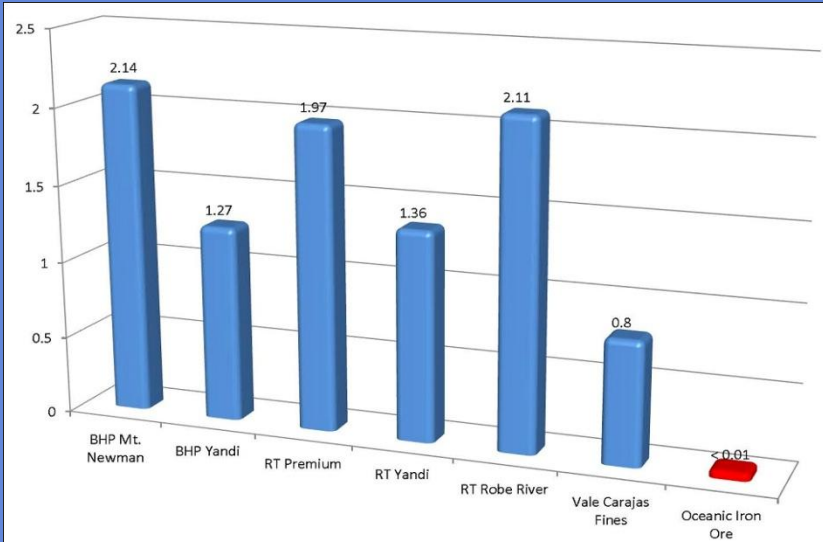
Fe	SiO ₂	MgO	CaO	Al ₂ O ₃	Na	K
66.6%	4.5%	0.1%	0.4%	<0.01%	<0.01%	<0.01%

Mn	Ti	Cr	V	P	S
0.22%	<0.01%	<0.01%	<0.01%	<0.01%	0.03%

- Combined concentrate includes 64% hematite and 30% magnetite
- Ratio of hematite to magnetite is 2.1 : 1

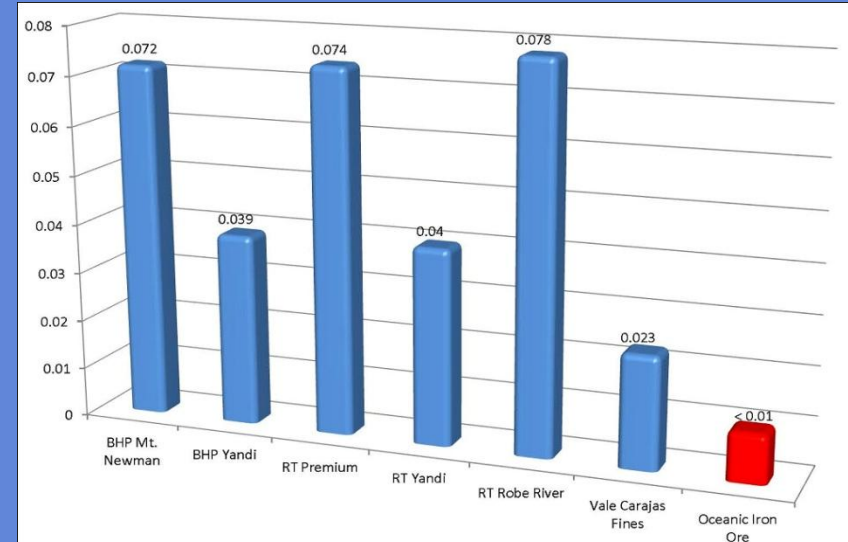
* Analysis for Castle Mountain deposit

Alumina - %AlO₂O₃



Source: Alderon Iron Ore, Sept 2012

Phosphorus - %P

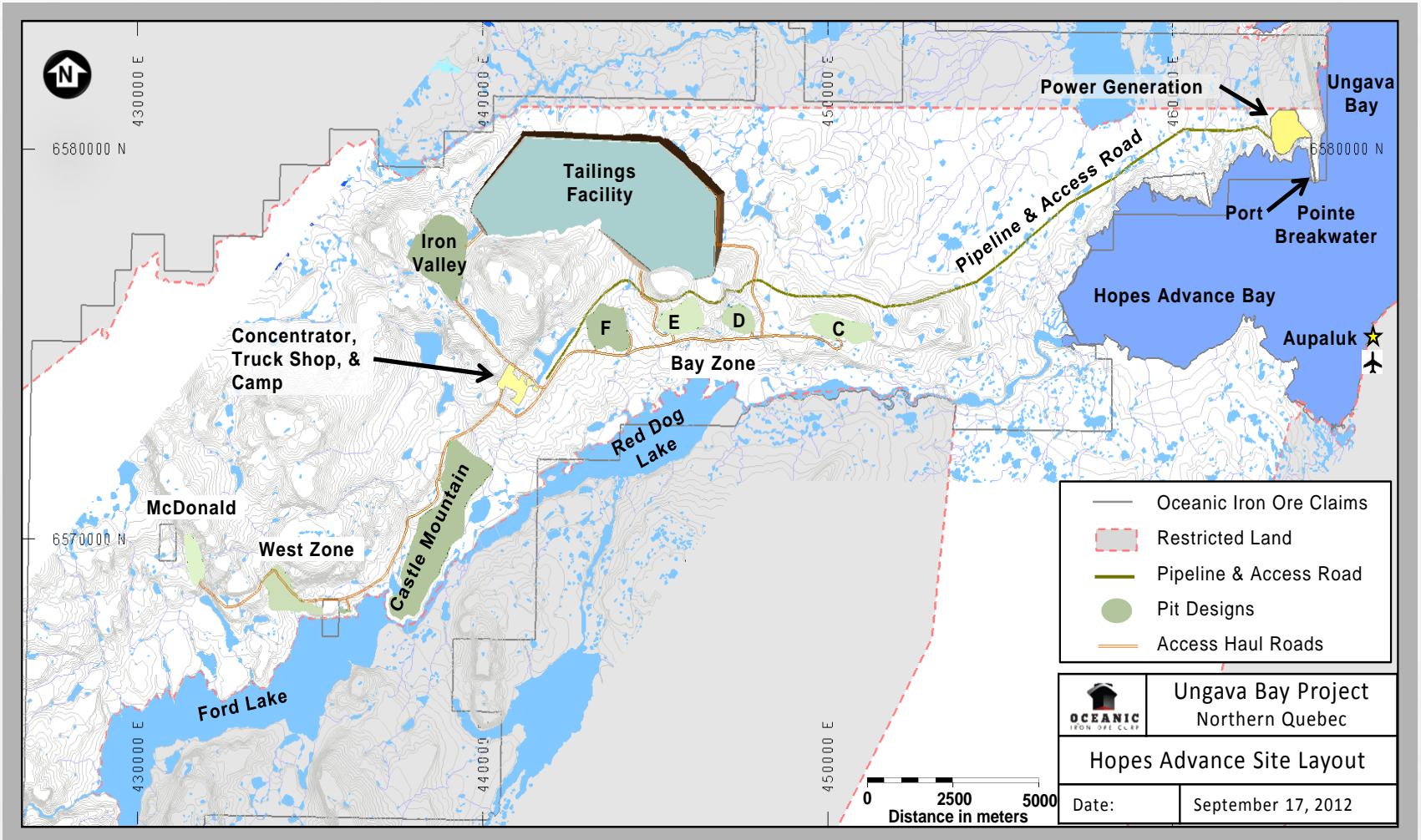


Source: Alderon Iron Ore, Sept 2012

- High quality product with amongst the lowest alumina and phos content
- Positive impact on blast furnace performance and overall operating and capital costs

Hopes Advance Site Layout

- No rail requirement



Port & Shipping Logistics

- September 2013 – results of Shipping Optimization Study led by AMEC
 - Includes input from shipping & transshipment companies as well as port authorities:
 - Fednav Limited
 - Canada Steamship Lines
 - Europees Massagoed Overslagbedrijf
 - Shipping strategy is technically feasible
 - Direct shipments during ice free months
 - Transshipment during winter months
 - **CFR Cash Costs under \$65/tonne (including shipping) to the port of Qingdao China**
 - Decrease in bunker price since Optimization Study was completed results in approximately \$5/ tonne reduction in average annual shipping costs
 - Ports considered: Nuuk, Rotterdam & St. Pierre & Miquelon



Pointe Breakwater Port Site

Viable Year-Round Shipping Routes



- Hopes Advance Bay is located at the midpoint between Deception Bay to the NW and Voisey's Bay to the SE
- Proven shipping technology: Glencore Xstrata, Vale, and soon Canadian Royalties all shipping 12 months per year with two of three operations located further north than Hopes Advance

Thomas Paterson, Senior Vice President of Arctic Shipping Company Fednav:

"Our extensive experience operating in the Canadian Arctic allows us to conclude that shipping from the Hopes Advance project can be accomplished year round. Fednav looks forward to following up our budget estimate provided for this Study by submitting a competitive proposal for Oceanic's Hopes Advance project at a future date and would be pleased to participate in satisfying the project's long term shipping needs."

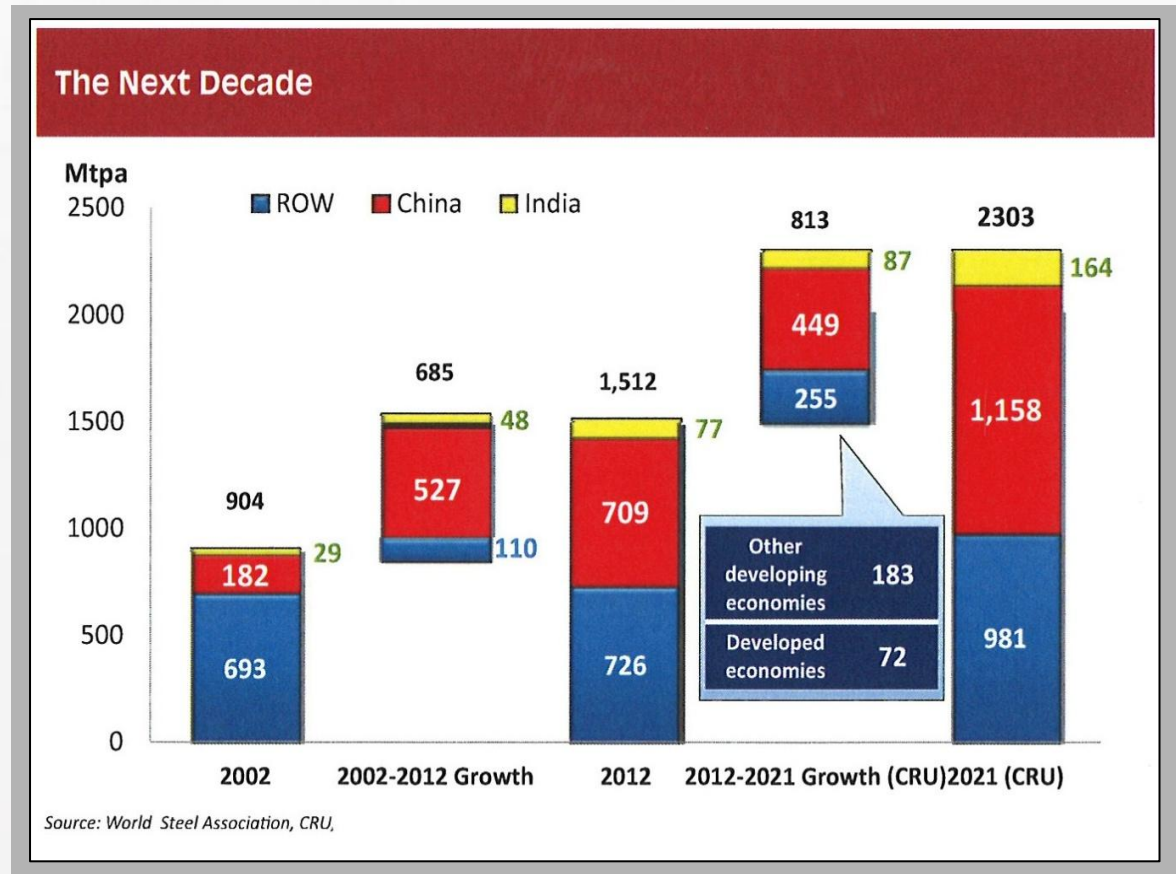
Social and Environmental Considerations

- A corporate philosophy and first consideration in Hope's Advance development
 - Clear communication and buy-in required from employees, consultants and contractors
- Early stakeholder and government interaction
 - LOI agreed with Inuit community
- Focus on addressing the needs of local people while also respecting the culture and environment
- Set a standard against which future projects across the industry are measured



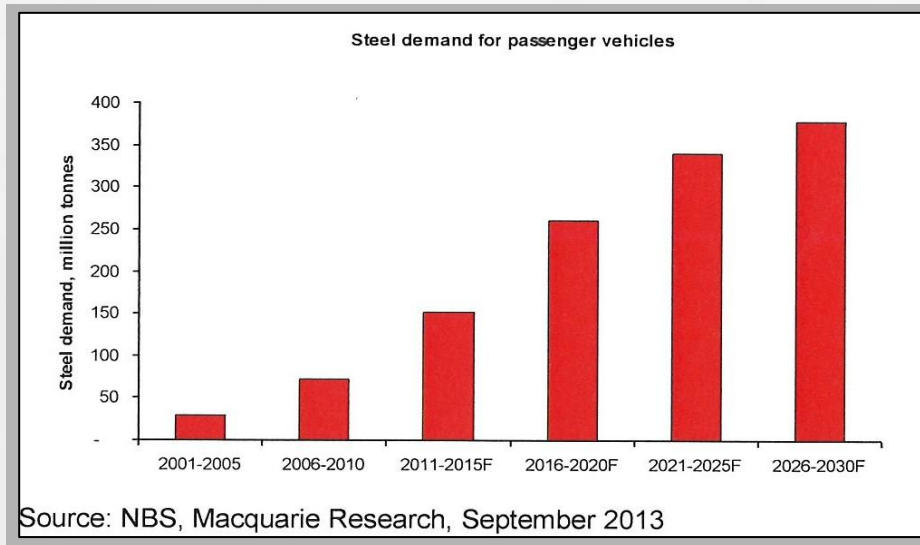
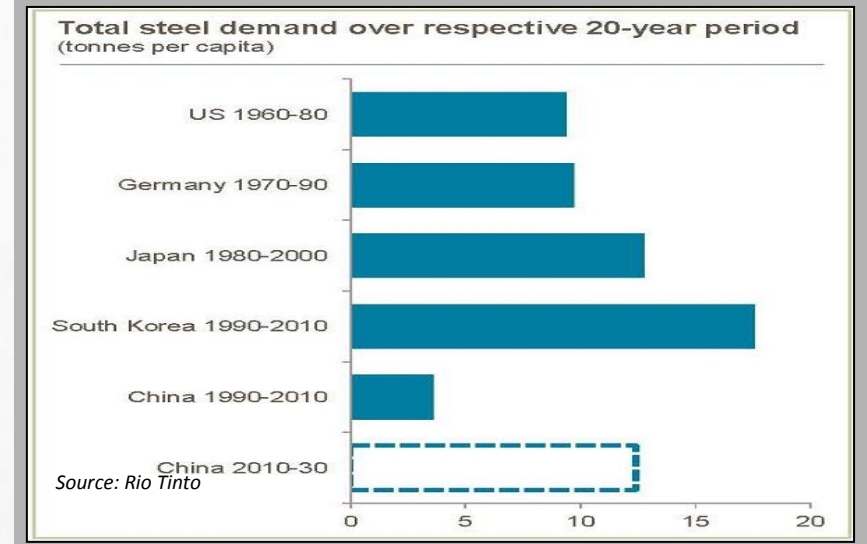
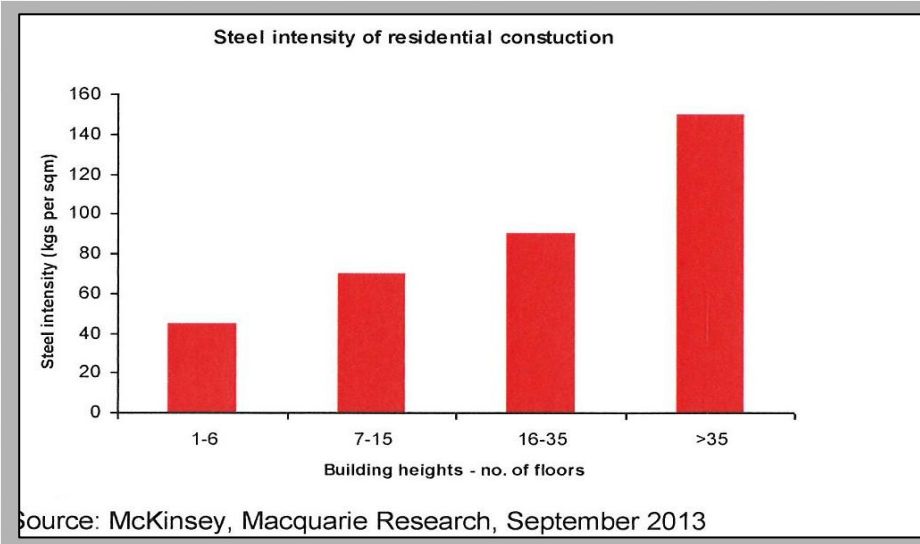
Global Steel Production to Increase 50% by 2021

- Driven by global population growth
- China will lead, however India and growth in other geographic regions also contributors
- Growth in global construction sector projected at +70% by 2025
- Economic iron ore resources in China declining with 40% of China's capacity deemed uneconomic by 2018
- Next cycle will be defined by low cost, high quality production streams



China Steel Demand

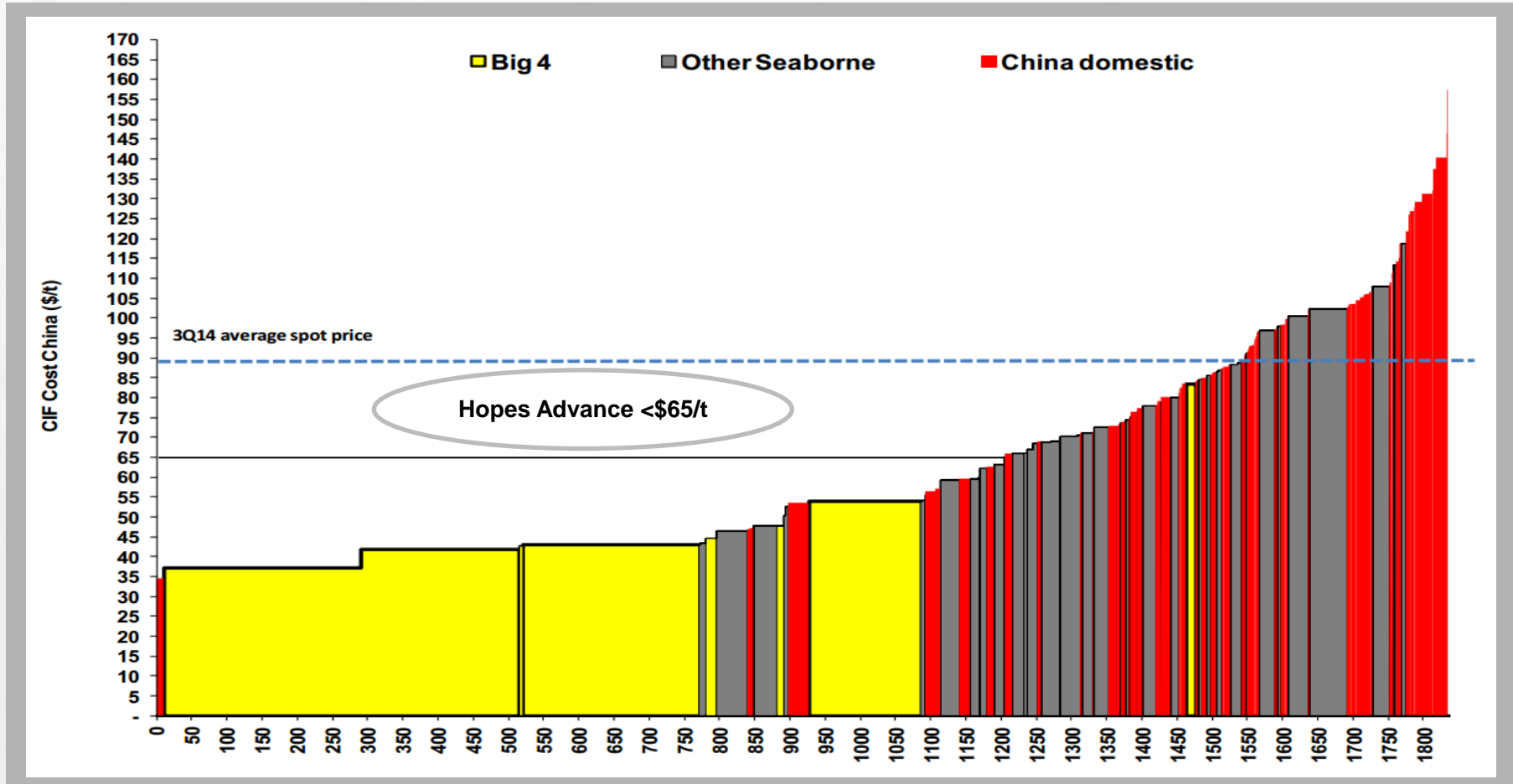
Robust & Growing Over Medium - Long Term



- China's cumulative steel consumption per capita remains well behind developed world
- New and replacement consumption will drive future growth focused in automotive, machinery and "white" products such as appliances, air conditioners, etc.

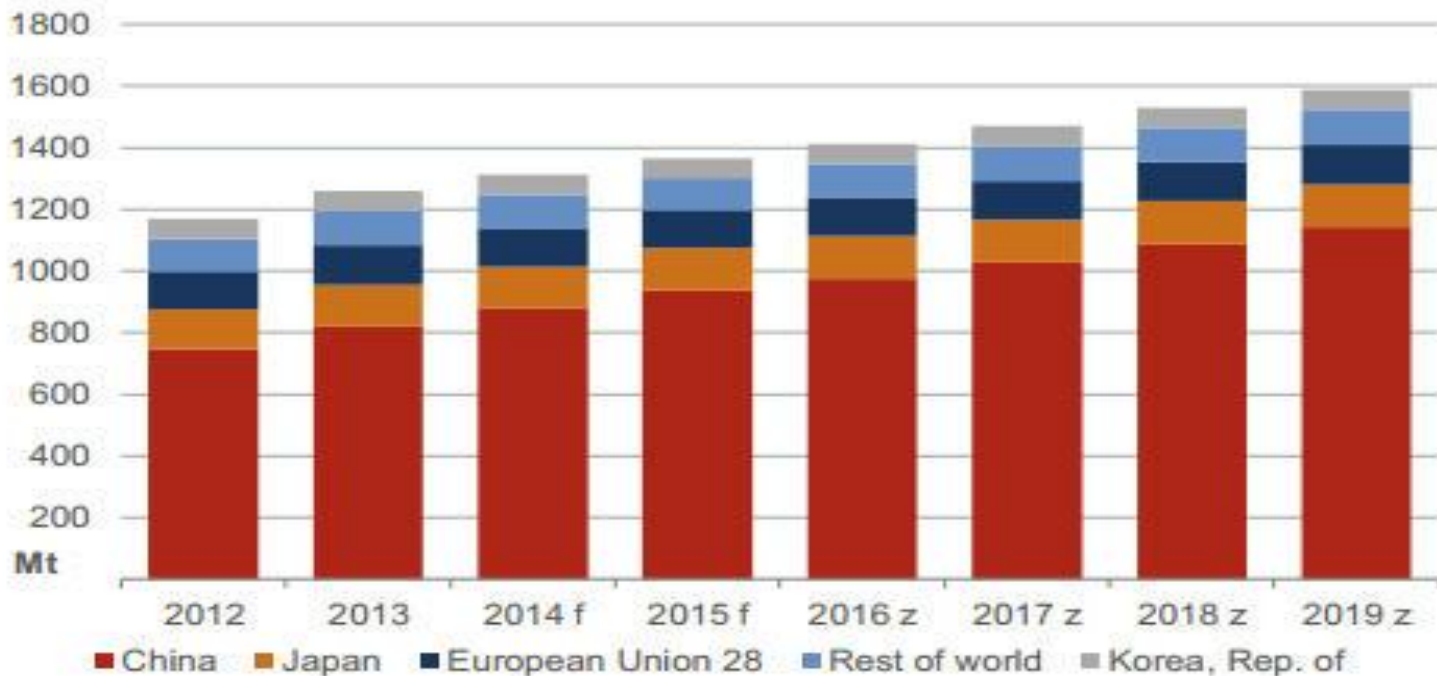
Supply Cost CIF China

“The National Development and Reform Commission on February 3, 2014 said Chinese steelmakers should keep building up stakes in global iron-ore assets in the interests of China's strategic security and "speaking rights," or influence, in global trade. China's ore imports rose 10% last year to a record 819 million metric tons, according to customs data”



China's Increasing Importance as an Iron Ore Importer

World iron ore import destinations

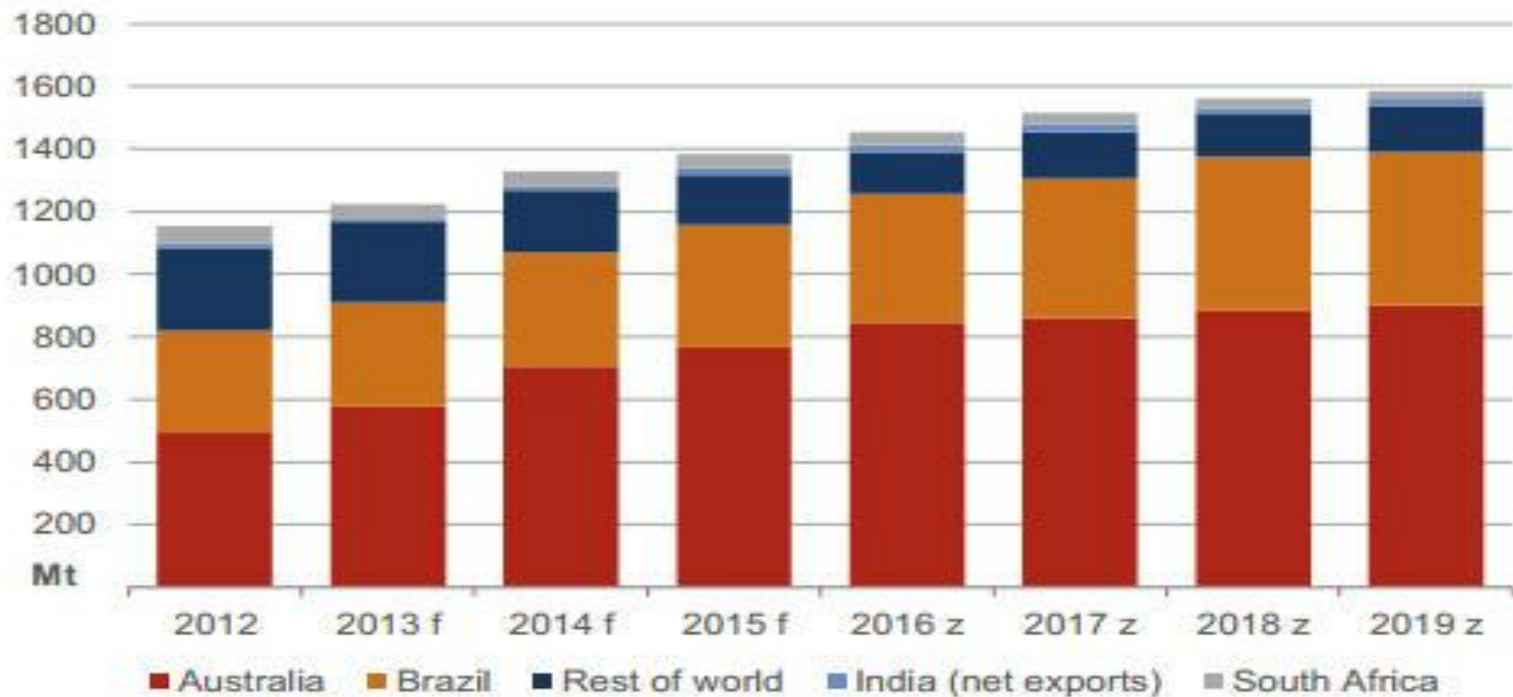


f BREE forecast. z BREE projection

Sources: BREE; UNCTAD.

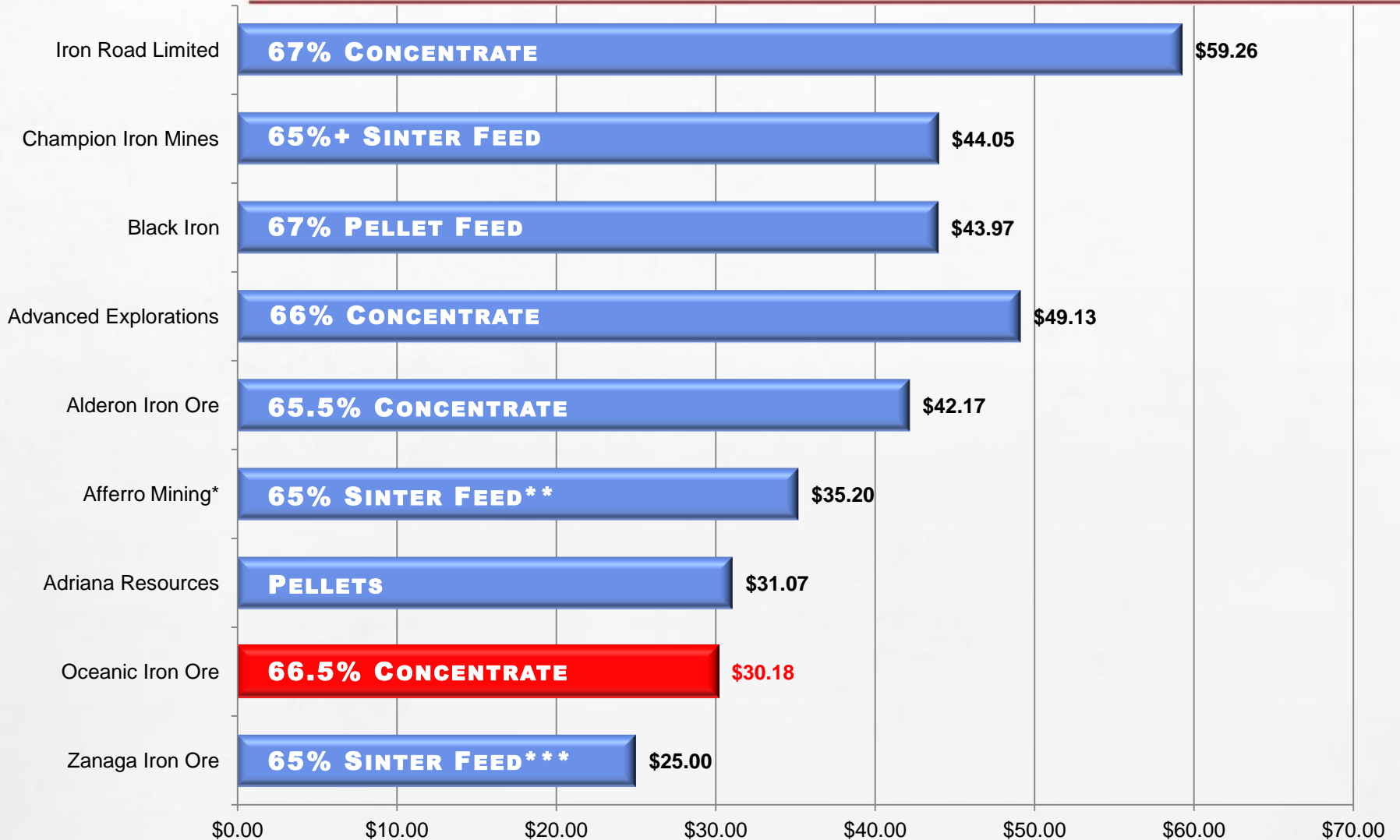
World Iron Ore Export Sources

World iron ore export sources



f BREE forecast. z BREE projection
Sources: BREE; UNCTAD.

Low Operating Cost Relative to Peers



* 15 mtpa production

** Also expected to produce 61.5% DSO and 68% pellet feed

*** Also expected to produce 67% concentrate

Operating Cost (\$/t)

Hopes Advance – The Premier Iron Ore Development Project

- Exceptional large scale resource in low risk jurisdiction
- Low cost producer: \$30/tonne life of mine
- High grade (66.5%) premium iron concentrate for seaborne market
- Low impurities = high quality source of supply
- Fast track development schedule independent of 3rd party infrastructure and government funding

"The cash costs estimates are low relative to Canadian peers and reflect the low 1.17:1 strip ratio at Hopes Advance, particularly in the earlier years (0.57:1 in years 1 to 15) and the proximity of the deposit and infrastructure to the targeted port site. Oceanic plans to utilize a 26km pipeline to slurry iron ore concentrate from the mill to the planned port site on Ungava Bay. The short distance to tidewater and no need for rail transportation have a significantly positive impact on operating costs compared to peers."

Daniel Greenspan, Macquarie Capital Markets Canada, July 2013

The image features a textured, light gray background. On the left side, there is a large, abstract graphic composed of several overlapping shapes. At the top left, there is a black curved shape. Below it is a white curved shape. Further down is a large black shape that tapers to the right. At the bottom left, there is a red shape. The overall composition is modern and minimalist.

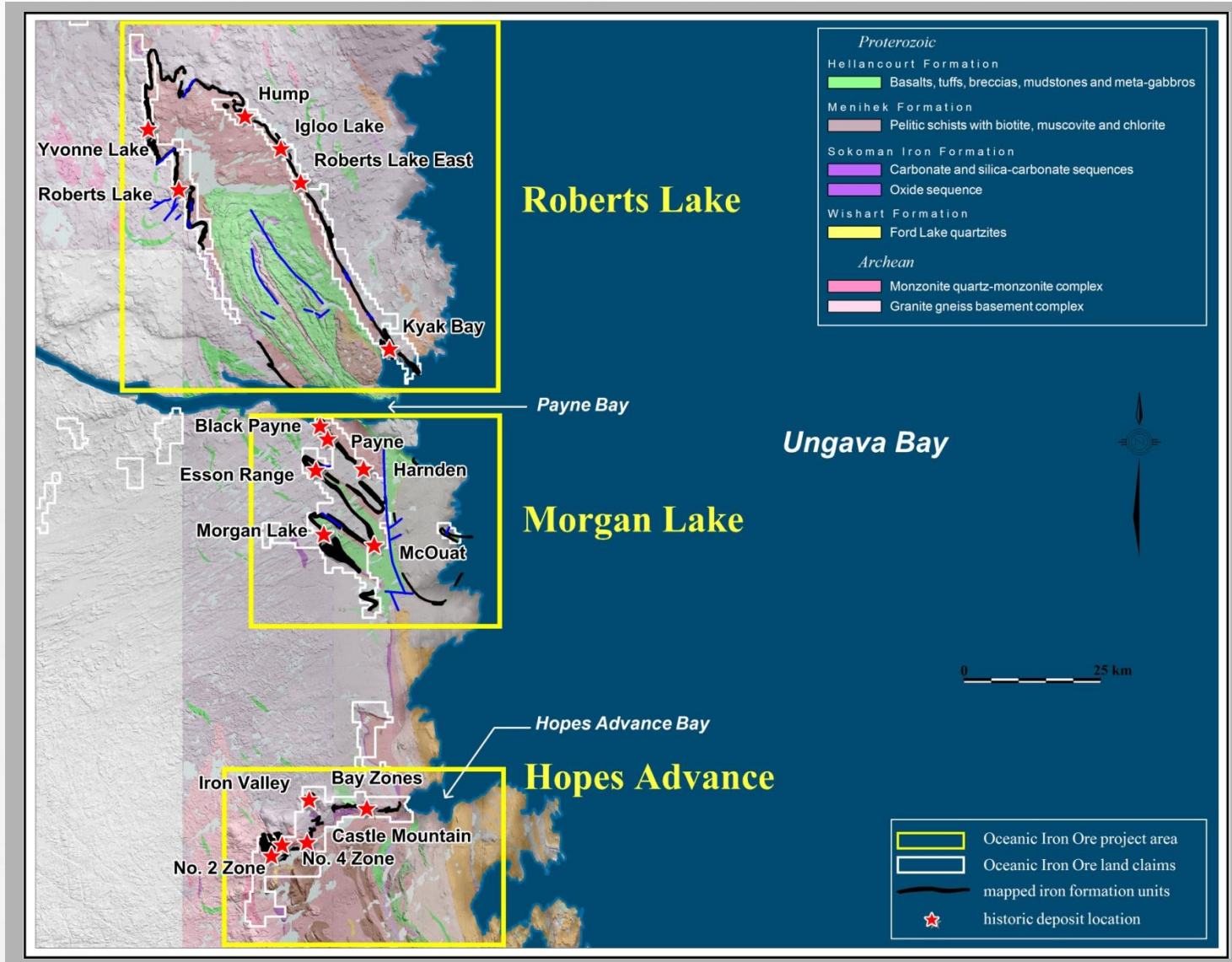
APPENDICES

Leadership Team

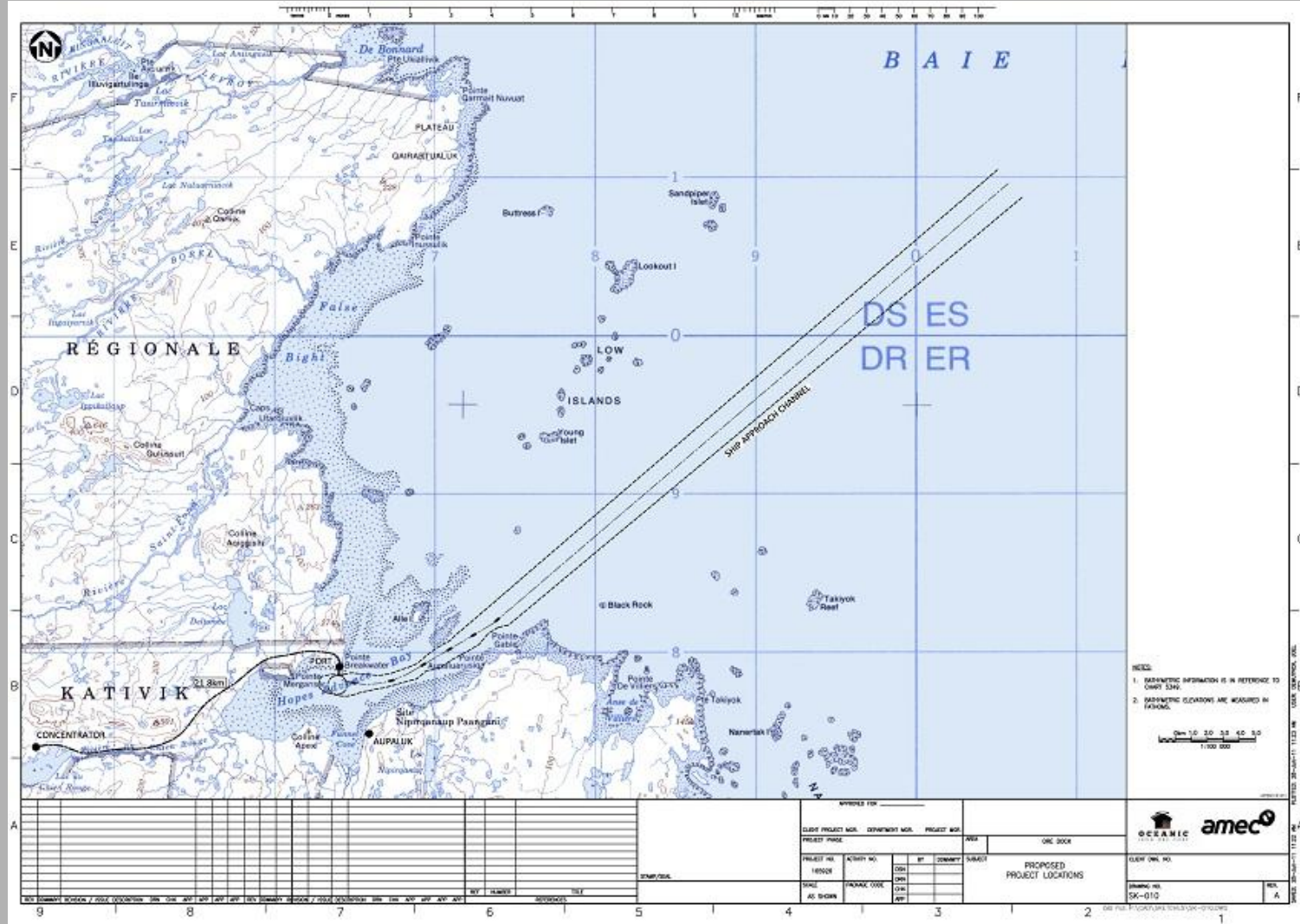
<p>Steven Dean, Executive Chairman and Director</p>	<ul style="list-style-type: none"> • A Fellow of the Australian Institute of Mining and Metallurgy, a Member of the Canadian Institute of Mining, Metallurgy and Petroleum, and a Fellow of the Institute of Chartered Accountants of Australia. Extensive experience internationally in mining, most recently as President of Teck Cominco Limited (now Teck Resources Ltd.). Teck is a major diversified resource company and is the largest producer of metallurgical coal in North America and the No. 2 exporter of metallurgical coal in the world to the globe's steel manufacturers. • A founding director of Normandy Poseidon Group, (which became Normandy Mining) Australia's largest gold producer until its sale to Newmont Mining in 2002, as well as founder of PacMin Mining which became a subsidiary of Teck Corporation in 1999. Also a co-founder and former chairman of Amerigo Resources Ltd.
<p>Alan Gorman, President, CEO and Director</p>	<ul style="list-style-type: none"> • Over 30 years experience operating major mines and mining projects • Extensive experience operating in northern and arctic environments • Previously Executive VP Operations for Goldbrook Ventures and of Jien Canada Mining Ltd's Nunavik Nickel Project, as well as Operations Manager for Baffinland Iron Mines Corp
<p>Chris Batalha, CFO and Corporate Secretary</p>	<ul style="list-style-type: none"> • Chartered Accountant, Audit Manager at PWC, employed by PWC 5+ years • Previously Corporate Controller Oceanic Iron Ore Corp between 2011 – 2014 • Accounting, finance, corporate governance, M&A experience
<p>Rodney (Rod) Johnson Ph.D., VP Geometallurgy</p>	<ul style="list-style-type: none"> • Served as chief geometallurgist and process mineralogist for Cliffs Natural Resources, Inc., chief geologist for Copper Range Company at the White Pine Mine, and senior exploration geologist and nickel commodity specialist for Western Mining Corporation • Ph.D. in Geology from Michigan Technological University with specialty in the areas of metallic ore deposits, structural geology, low temperature aqueous geochemistry, and geohydrology
<p>John Hall, VP Shipping and Marine Services</p>	<ul style="list-style-type: none"> • 35 years experience in industrial bulk transportation, specializing in ports, shipping and trans-shipment • Past experience includes consulting on port & marine logistics for Baffinland Iron Mines, Severstal, Alderon Iron Ore, Dominion Terminal Services, Nucor Steel, Teck Corp., and Coeclerici • Formerly involved in management with Canada Steamship Lines, Jepsens Group, and Skaarup including President & CEO of Jepsens Canada
<p>Gordon Keep, Director</p>	<ul style="list-style-type: none"> • Extensive business experience in investment banking and creating public natural resource companies. Currently Executive Vice-President of Fiore Financial Corporation, a private boutique merchant banking firm • Also serves as an officer and/or director for several natural resource companies
<p>Hon. John Reynolds, P.C. Director</p>	<ul style="list-style-type: none"> • Served as both an MLA in British Columbia from 1983 to 1991 and as a Member of Parliament in Ottawa, Ontario from 1972 to 1977 and then from 1997 to 2006 • Currently a Member of the Queen's Privy Council for Canada and has been a Senior Strategic Advisor for the law firm McMillan (formerly Lang Michener LLP) since March 2006
<p>Daisy Zhu, Director</p>	<ul style="list-style-type: none"> • Currently serves as Director of Ansteel-CapitalAsia Global Engineering Inc. where she focuses on international business development. • Past industry experience includes senior marketing and research assignments with Colgate Palmolive 1994-2003 and Wrigley Confectionary Company 2003-2009. • Provided business consultancy services through IPSOS to various multinational companies including Unilever, Wrigley, Colgate, GSK, LVMH, and South China Airline.

UNGAVA PROPERTY PROJECT AREAS

3,703 CLAIMS – 1,568 SQ.KM.

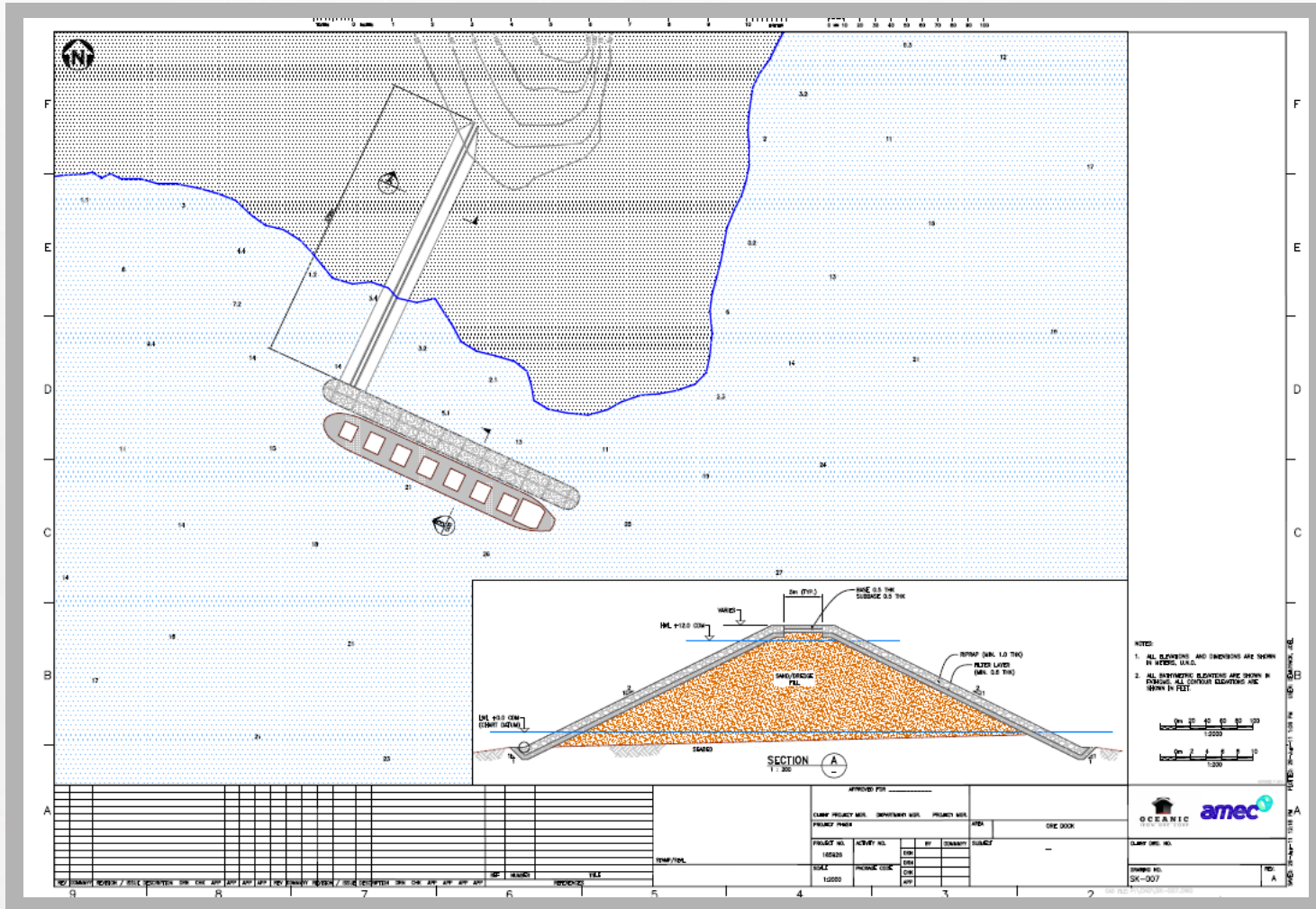


Conceptual Port Location

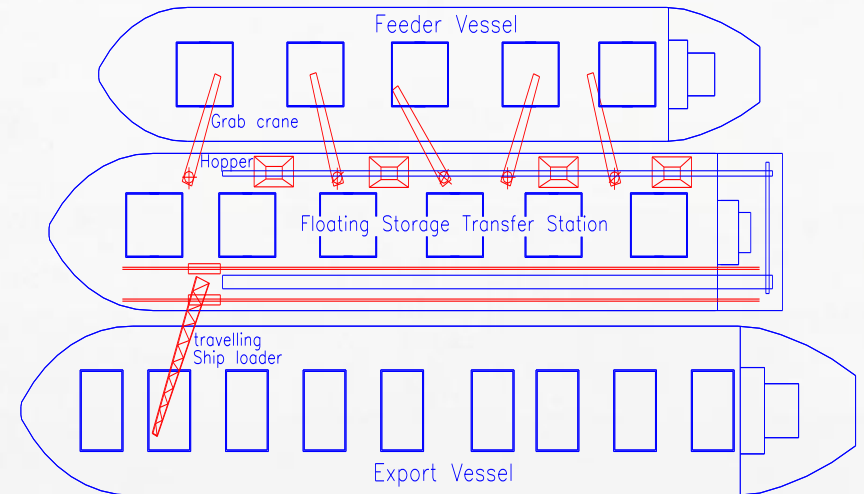
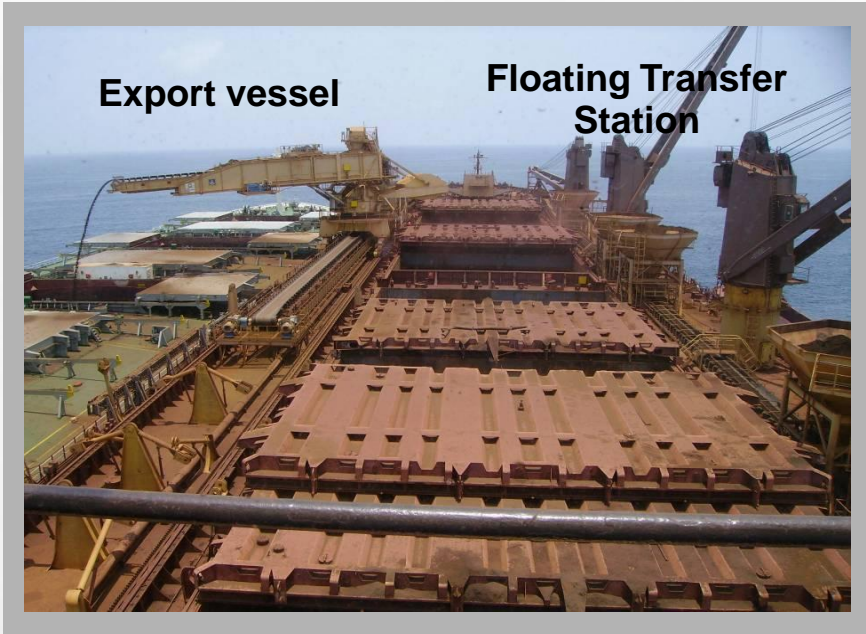


Conceptual Port Design

- Pointe Breakwater has natural attributes which make it an ideal potential location for a year round large tonnage vessel deepwater port



Trans-shipment



- Floating transfer station with deck mounted equipment to transfer cargo from ice class vessels to export vessel

Ice Class Ship In Action



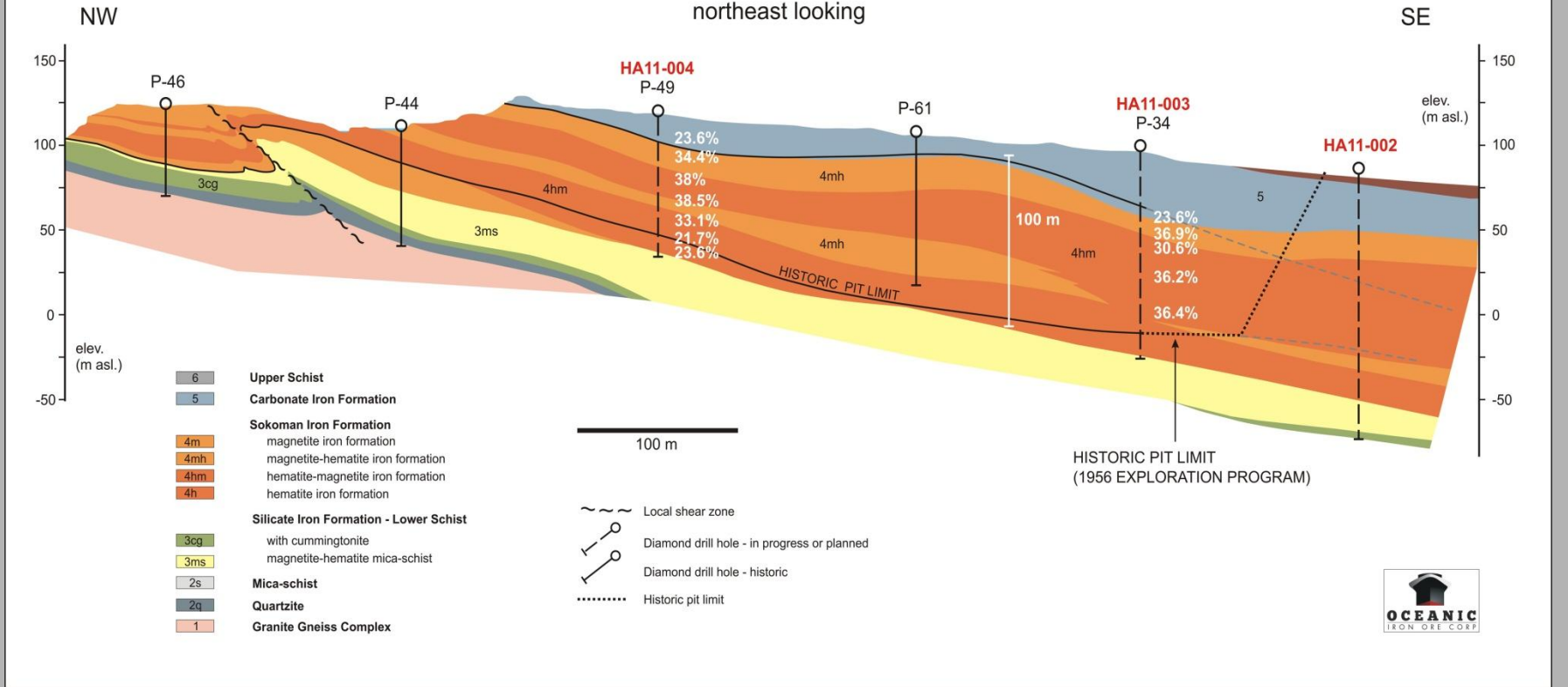
amec

Source: Aker Arctic

Section View of the Castle Mountain Grid

Castle Mountain SECTION 30+00

northeast looking



Previous Work

- Labrador Trough noted for iron potential in 1895 by GSC
- First claims staked in Hopes Advance area in 1951
- 1950-1970 active exploration including sampling, trenching, drilling, metallurgical testwork
- Ungava Iron Ores Company completed most of the exploration in Hopes Advance area (1951-1962) including 12,935 m in 185 holes in 8 deposits. Scoping and pre-feasibility studies were completed
- International Iron Ores Limited exploration of the Roberts Lake area (1952-1957) including 5,115 m in 97 holes in 6 deposits
- Oceanic Iron Ores Company was active in the Morgan Lake area (1955-1957) and work included 3,611 m in 45 holes in 2 deposits

Roberts Lake – Historical Resource*

Deposit	Crude Resource (million metric tonnes)	Head Iron (Sol. Fe)	Exploration Drillholes	Metres Drilled	Source	Date
Kayak Bay Zone (Zone 1)	111.7	35.3%	45	1,880	P.E. Cavanagh	1970
Payne River (Zone 2)	22.3	31.0%	26	2,535	P.E. Cavanagh	1970
Igloo Lake (Zone 3)	101.6	38.0%	11	248	P.E. Cavanagh	1970
Hump (Zone 4)	203.2	37.6%	15	452	P.E. Cavanagh	1970
Total Drill Indicated	438.8	36.8%	97	5,115	---	---
Synclinal (Zone 5)	203.2	36.0%	0	0	P.E. Cavanagh	1970
Yvon Lake (Zone 6)	101.6	36.8%	0	0	P.E. Cavanagh	1970
Potential Zone 1	254.0	35.0%	0	0	P.E. Cavanagh	1970
Potential Zone 2	254.0	35.0%	0	0	P.E. Cavanagh	1970
Total Potential	812.8	35.5%	0	0	---	---
Total Roberts Lake Area	1,251.6	35.9%	97	5,115	---	---

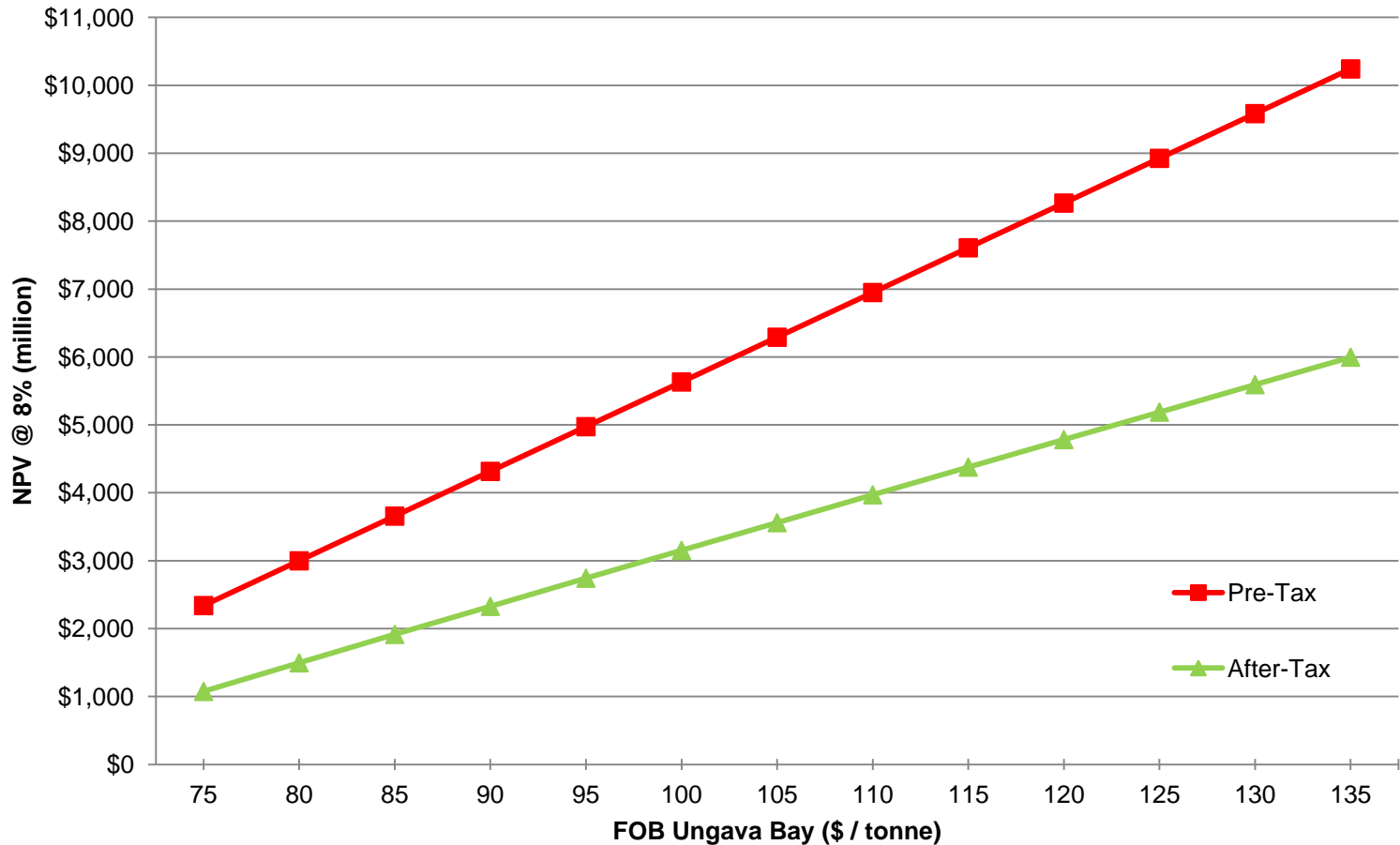
*These are historical resource estimates that do not comply with the current Canadian Institute of Mining, Metallurgy and Petroleum Resources (CIM) Definition Standards on Mineral Resources and Mineral Reserves as required by National Instrument 43-101 (NI 43-101) Standards of Disclosure for Mineral Projects. These historical resource estimates were described as “drill indicated” and “potential” at the time of reporting which does not correspond to the categorization set forth in sections 1.2 and 1.3 of NI 43-101. Although these historical resource estimates are relevant to support the presence of large areas of iron mineralization, these estimates are speculative, are based on very limited exploration drilling and will require extensive new exploration and metallurgical efforts to validate. They should not be treated as current mineral resources or reserves or relied upon until confirmed by current exploration and a Qualified Person. A Qualified Person has not done sufficient work to upgrade or classify these historical resource estimates as current NI-43-101 compliant mineral resources. The Roberts Lake historic resource was reported in 1970 from drilling in the late 1950s, the Morgan Lake historic resource was reported in 1957 and 1964, and the Hopes Advance historic resource was reported in 1958. Further information in respect of these historic resources is outlined in a 43-101 technical report prepared by Micon entitled “Technical Report on the Ungava Iron Property – Ungava Bay Region, Quebec, Canada dated Oct. 29, 2010, available on SEDAR.

Morgan Lake – Historical Resource*

Deposit	Crude Resource (million metric tonnes)	Head Iron (Mag. Fe)	Exploration Drillholes	Metres Drilled	Source	Date
Payne Range	72.4	23.9%	29	1,427	G.A. Gross	1964
Morgan Lake	437.8	21.8%	16	2,184	A.T. Griffis	1957
Total Drill Indicated	510.2	22.1%	45	3,611	---	---
<i>Morgan Lake Potential</i>	<i>101.6</i>	<i>22.7%</i>	<i>0</i>	<i>0</i>	<i>A.T. Griffis</i>	<i>1,957</i>
Total Morgan Lake Area	611.8	22.2%	45	3,611	---	---

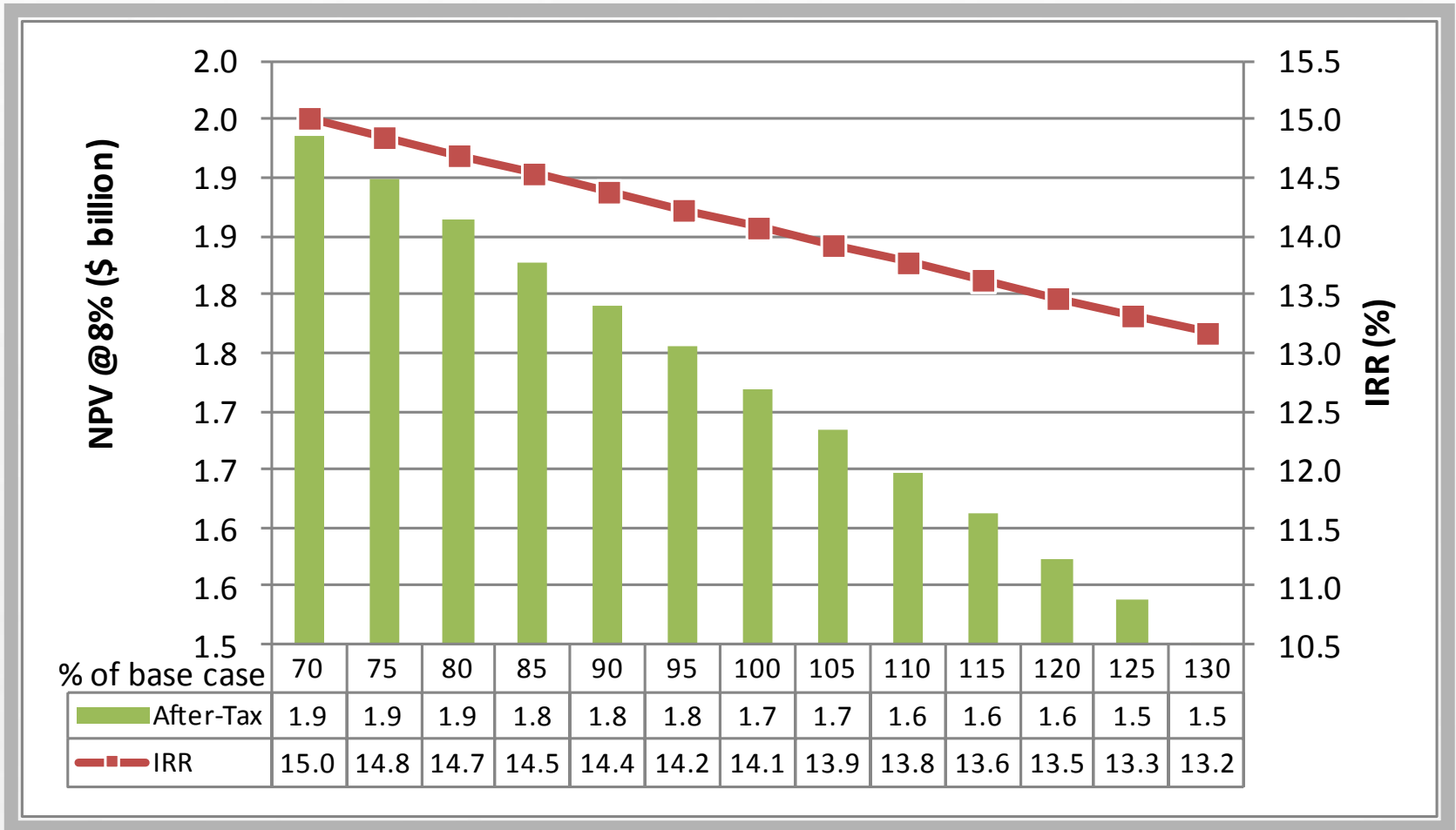
*These are historical resource estimates that do not comply with the current Canadian Institute of Mining, Metallurgy and Petroleum Resources (CIM) Definition Standards on Mineral Resources and Mineral Reserves as required by National Instrument 43-101 (NI 43-101) Standards of Disclosure for Mineral Projects. These historical resource estimates were described as “drill indicated” and “potential” at the time of reporting which does not correspond to the categorization set forth in sections 1.2 and 1.3 of NI 43-101. Although these historical resource estimates are relevant to support the presence of large areas of iron mineralization, these estimates are speculative, are based on very limited exploration drilling and will require extensive new exploration and metallurgical efforts to validate. They should not be treated as current mineral resources or reserves or relied upon until confirmed by current exploration and a Qualified Person. A Qualified Person has not done sufficient work to upgrade or classify these historical resource estimates as current NI-43-101 compliant mineral resources. The Roberts Lake historic resource was reported in 1970 from drilling in the late 1950s, the Morgan Lake historic resource was reported in 1957 and 1964, and the Hopes Advance historic resource was reported in 1958. Further information in respect of these historic resources is outlined in a 43-101 technical report prepared by Micon entitled “Technical Report on the Ungava Iron Property – Ungava Bay Region, Quebec, Canada dated Oct. 29, 2010, available on SEDAR.

NPV Sensitivity to FOB Ungava Bay Iron Ore Price (Unlevered)*



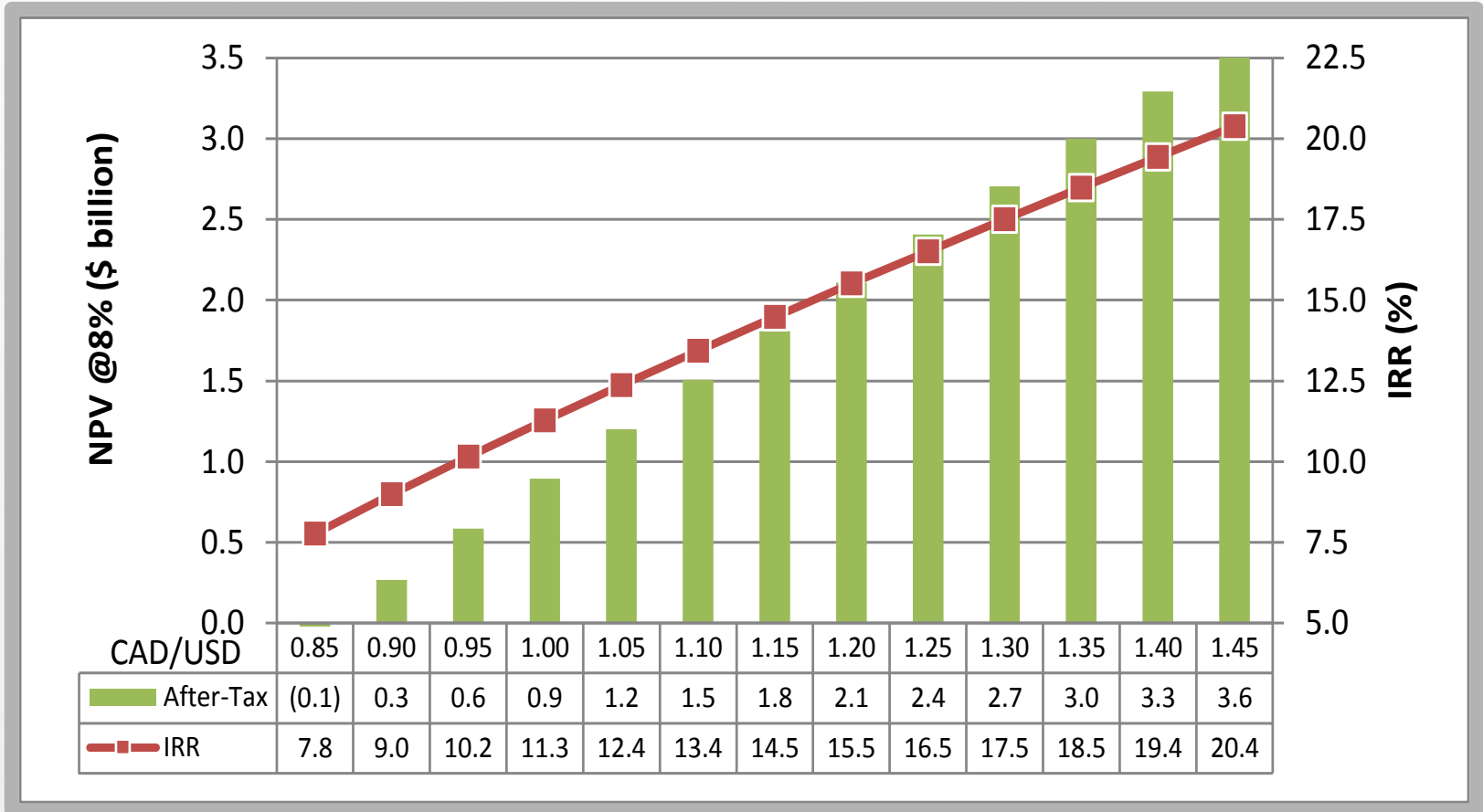
* Source: Oceanic Iron Ore Corp. – NI 43-101 Technical Report on a Prefeasibility Study Completed on the Hopes Advance Bay Iron Deposits Ungava Bay Region, Quebec, Canada NTS 24M/08, 24N05 dated November 2, 2012

NPV Sensitivity to Fuel Pricing



* Source: Oceanic Iron Ore Corp. – NI 43-101 Technical Report on a Prefeasibility Study Completed on the Hopes Advance Bay Iron Deposits Ungava Bay Region, Quebec, Canada NTS 24M/08, 24N05 dated November 2, 2012

NPV Sensitivity to CAD:USD Exchange Rate



* Source: Oceanic Iron Ore Corp. – NI 43-101 Technical Report on a Prefeasibility Study Completed on the Hopes Advance Bay Iron Deposits Ungava Bay Region, Quebec, Canada NTS 24M/08, 24N05 dated November 2, 2012

Construction Capital Costs*

Capital Description	Initial Capex 2014 to 2016 (\$000)	Expansion Capex 2025/2026 (\$000)
Mine Equipment	92,658	61,231
Mine Development	66,203	2,918
Crusher	29,674	30,355
Concentrator	481,514	492,643
Pipeline	56,740	83,787
Port Filtering and Drying	325,654	267,401
Port and Marine Infrastructure	288,000	84,000
Power	377,892	26,775
Site Infrastructure	81,591	25,675
Site Roads	33,583	-
Camp and Offices	29,575	7,175
Airstrip Upgrade	11,824	-
Fresh Water Supply	10,469	3,621
Sewage	4,554	1,574
Tailings and Hazardous Waste Disposal	23,577	30,122
Communications	2,305	-
Mobile Equipment	9,983	-
Indirect Costs	499,962	249,378
Contingency and Closure Bond	427,899	241,135
Total Construction Capital	\$2,853,657	\$1,607,790

* Source: Oceanic Iron Ore Corp. – NI 43-101 Technical Report on a Prefeasibility Study Completed on the Hopes Advance Bay Iron Deposits Ungava Bay Region, Quebec, Canada NTS 24M/08, 24N05 dated November 2, 2012

Total FOB Operating Costs (Excluding Royalty)*

Category	Years 2017 - 2024	Years 2025 - 2026	Years 2027 – 2047	Life of Mine Average
	(10 MM T/YR & Self Generated Power)	(10 MM T/Y & Hydroelectric Power)	(Post Expansion - 20 MM T/YR)	
Mining <i>(\$/tonne all material)</i>	\$1.57	\$1.59	\$1.23	\$1.27
Mining <i>(\$/tonne product)</i>	\$5.46	\$6.30	\$7.78	\$7.37
Concentrator <i>(\$/tonne product)</i>	\$20.87	\$18.35	\$17.45	\$18.02
Port <i>(\$/tonne product)</i>	\$2.13	\$2.13	\$1.45	\$1.58
Site Services <i>(\$/tonne product)</i>	\$3.33	\$2.77	\$2.04	\$2.27
G&A (Site only) <i>(\$/tonne product)</i>	\$1.38	\$1.38	\$0.85	\$0.95
Total Operating Cost / tonne product <i>(excluding royalty)</i>	\$33.17	\$30.93	\$29.57	\$30.18

* Source: Oceanic Iron Ore Corp. – NI 43-101 Technical Report on a Prefeasibility Study Completed on the Hopes Advance Bay Iron Deposits Ungava Bay Region, Quebec, Canada NTS 24M/08, 24N05 dated November 2, 2012

Concentrator Operating Costs

LOM Concentrator Operating Costs (Thousand \$)

Period	2017 – 2024	2025 – 2026	2027 – 2047	LOM Total
Production Rate	10 M t/y	10 M t/y	20 M t/y	-
Power	Self-Generated	Hydroelectric	Hydroelectric	-
Operating Cost				
Manpower	\$126,113	\$32,285	\$424,882	\$583,280
Electric Power	\$977,857	\$184,539	\$3,641,264	\$4,803,661
Consumables, etc	\$103,948	\$26,611	\$543,593	\$674,152
Grinding Media, Reagents	\$222,816	\$57,041	\$1,165,205	\$1,445,062
Dryer – Bunker C	\$173,080	\$59,078	\$1,206,816	\$1,438,974
Dryer – Diesel	\$6,188	\$2,112	\$43,143	\$51,442
Materials handling – fuel	\$621	\$159	\$2,634	\$3,415
Materials handling – other	\$20,074	\$5,139	\$103,243	\$128,457
Total	\$1,630,698	\$366,964	\$7,130,780	\$9,128,443
Unit cost (\$/t concentrate)	\$20.87	\$18.35	\$17.45	\$18.02



OCEANIC

IRON ORE CORP

WWW.OCEANICIRONORE.COM

TSX:V - FEO